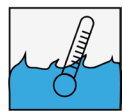
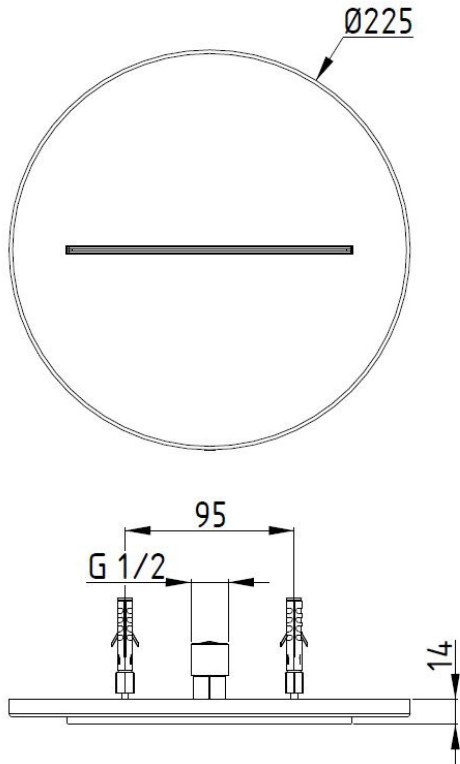


**ISTRUZIONI DI MONTAGGIO**  
**ASSEMBLY INSTRUCTIONS**



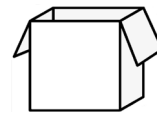
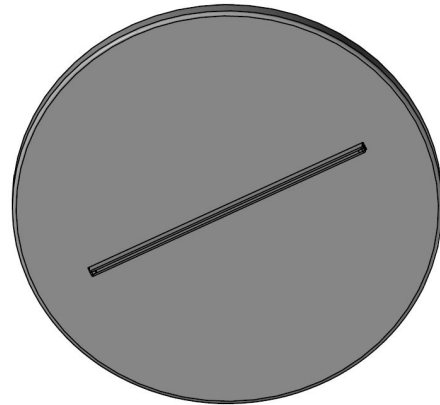
# Dimensioni generali / General dimensions



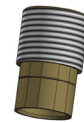
MAX 70°C  
BEST 38/40°C



MIN 1 Bar  
MAX 5 Bar  
BEST 3 Bar



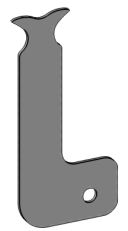
1x



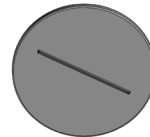
2x



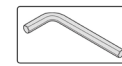
1x



1x



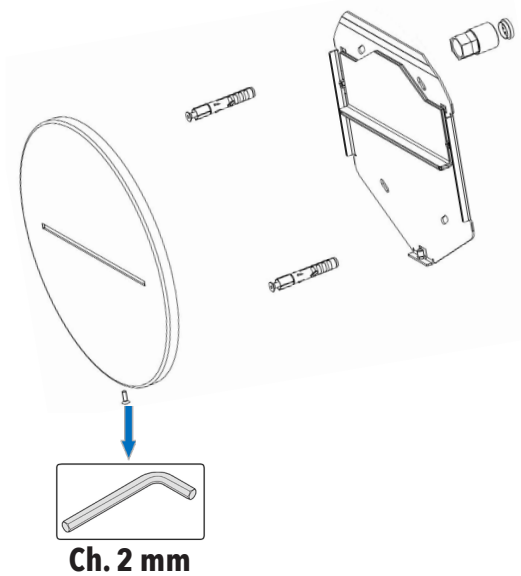
1x



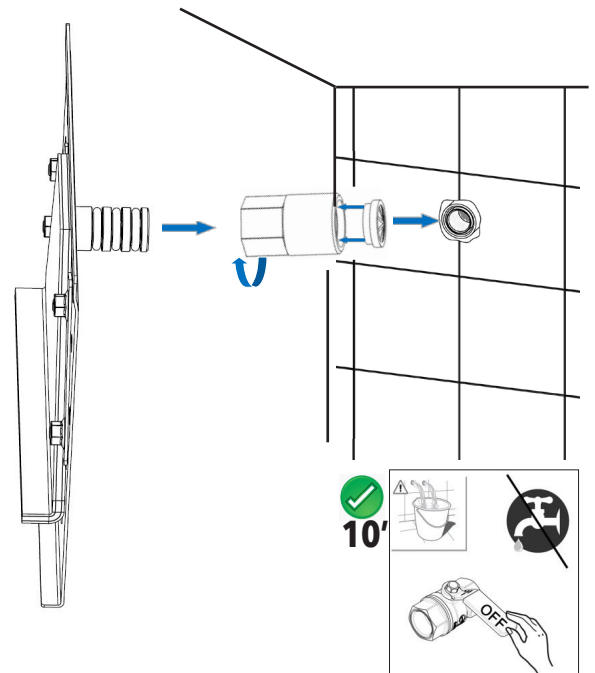
1x



1

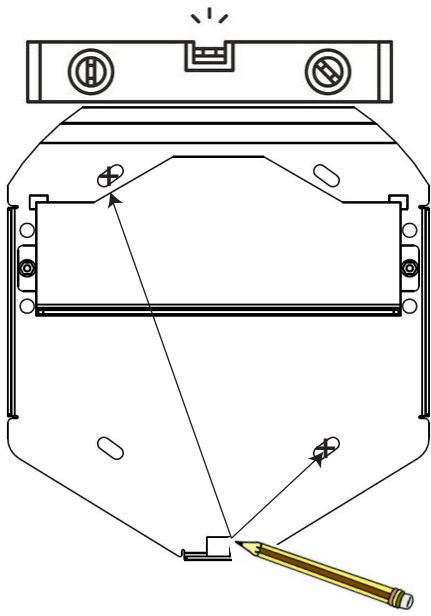


2

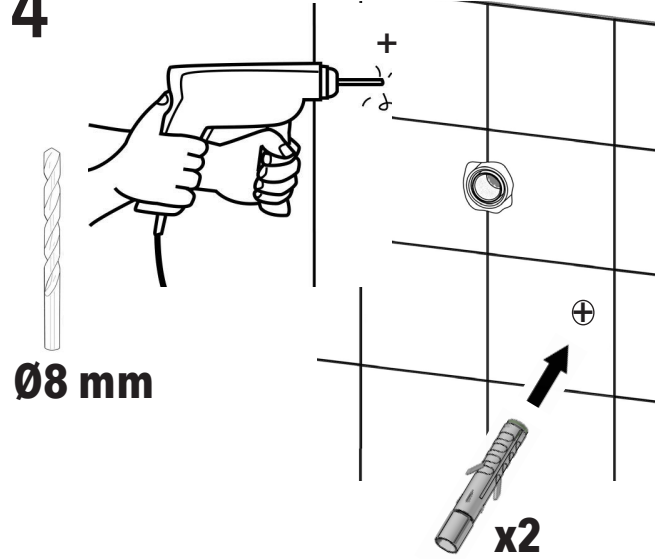


L'apparecchio deve essere installato da personale abilitato ai sensi e per l'effetto delle leggi in vigore.  
According to the law, all installation and maintenance operations require a qualified person.

3

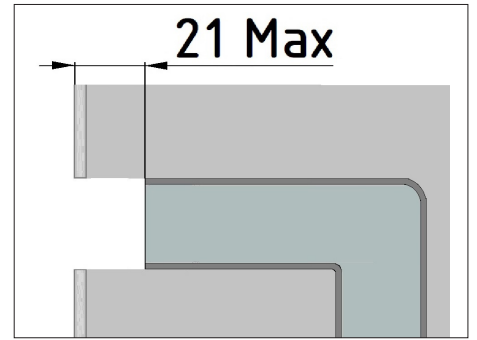
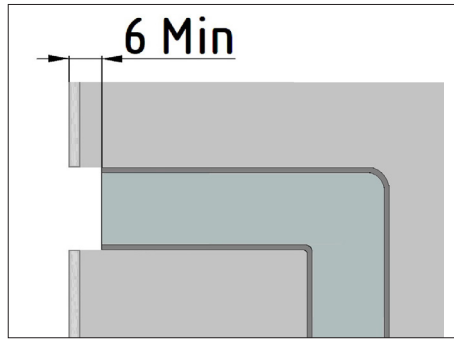
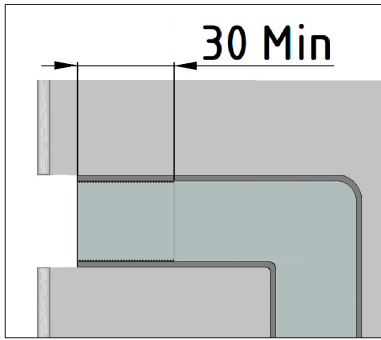


4

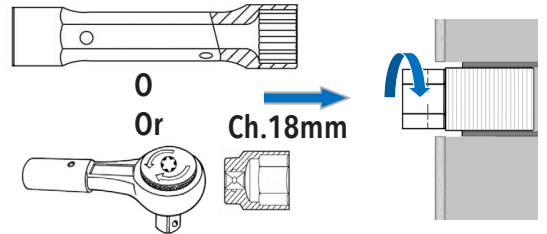
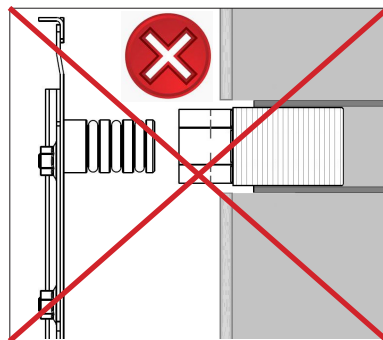
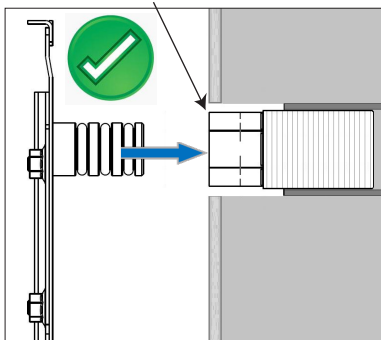



5

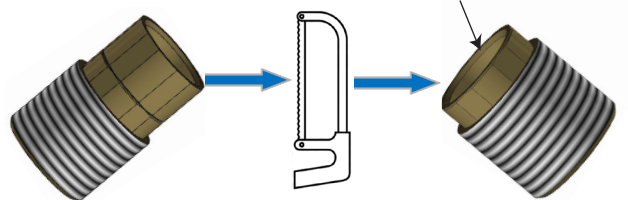
 **Tubo filettato**  
**Threaded tube**



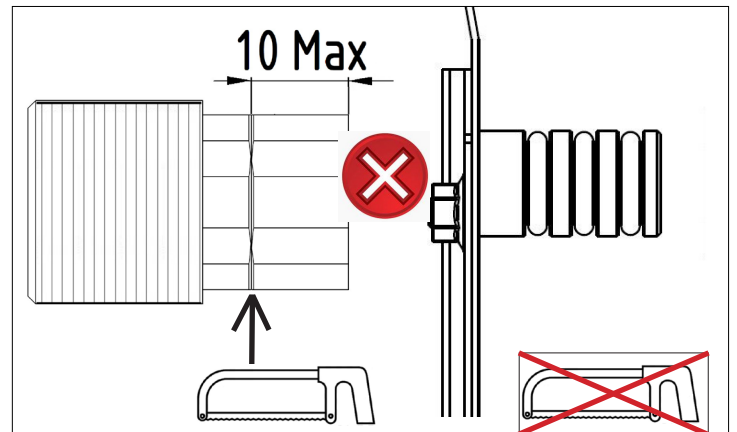
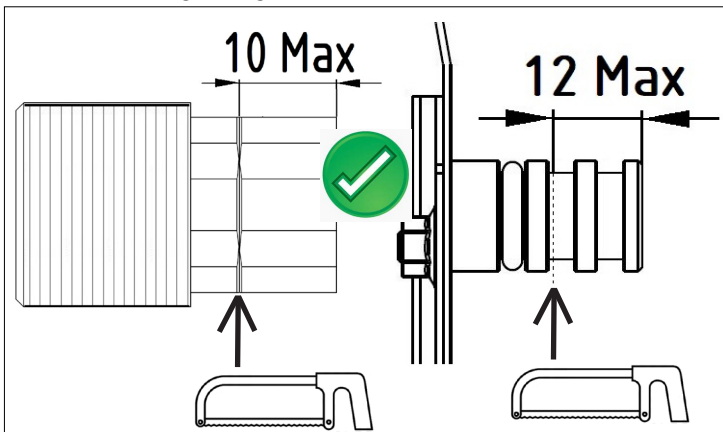
 **Boccola allineata alla parete**  
**Fitting aligned to the wall**



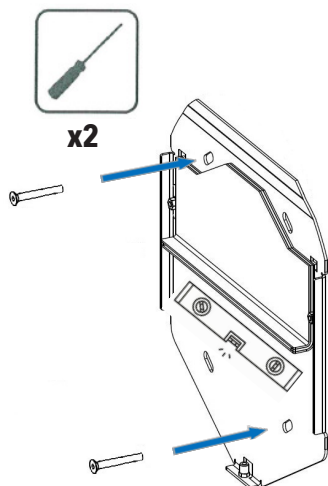
 **Smusso imbocco, Superficie priva di bave**  
**Chamfer inlet, surface free of burrs**



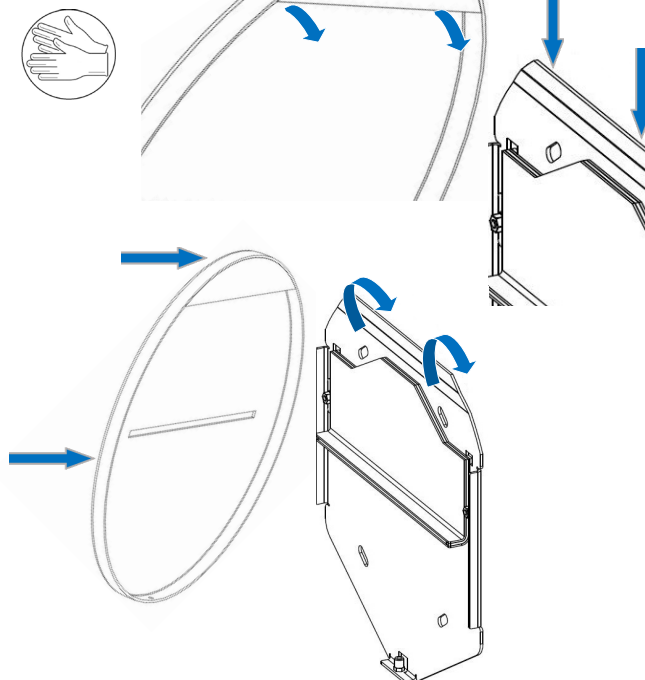
 **Boccola e innesto tagliabili**  
**Bushing and graft can be cut**



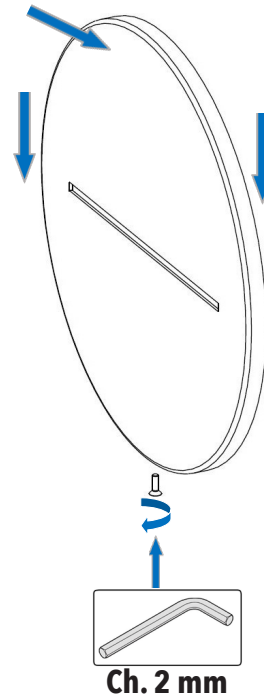
6



7



8

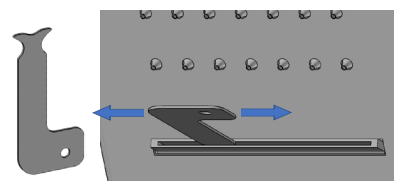


**DO NOT USED DETERGENT**

CH<sub>3</sub>CH<sub>2</sub>OH  
HCL  
H<sub>2</sub>SO<sub>4</sub>  
CL  
H<sub>3</sub>PO<sub>4</sub>  
OR OTHER CORROSIVE



**USE FOR CLEANING THE LIMESTONE  
IN CASE OF UNEVEN WATERFALL JET**



**LA GARANZIA DEL PRODOTTO NON COPRE**

L'utilizzo improprio.  
L'errata predisposizione dell'impianto idraulico.  
Danni causati da depositi di calcare o altre impurità.  
Detergenti non adatti.

**NOT COVERED BY PRODUCT CARE**

Not correct use.  
Incorrect setup of the hydraulic system.  
Water impurities or limeston.  
Not suitable detergents.



**DUE ANNI DI GARANZIA DEL PRODOTTO**

Contro i difetti o vizi di fabbricazione.

**TWO-YEAR PRODUCT CARE**

Against defects or defects of fabrication.

**ATTENZIONE:** Si declina ogni responsabilità relativa ad eventuali inesattezze contenute in queste istruzioni dovute ad errori di trascrizione.

**WARNING:** We decline all responsibility and eventual inaccuracy contained in the instructions due to transcript errors.